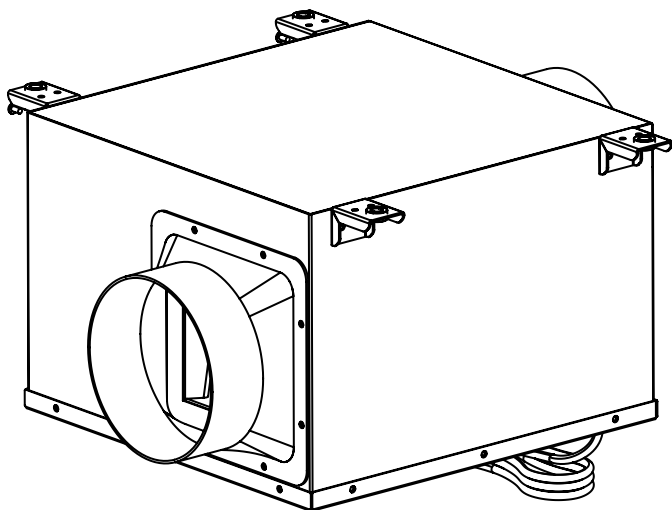




In-Line Exhaust Fan **F170 / F300**

Installation and Operations Manual



AlorAir Solutions INC.

Add: 14752 Yorba Ct Chino CA 91710 US

Tel: (888)-990-7469

E-mail: support@alorair.com

Specifications subject to change without notice.

IMPORTANT:

Please read this user manual thoroughly before installation.
Keep the manual safe for future reference.

TABLE OF CONTENTS

Important Warnings 1

Parts Description 1

Model and Parameters2

Parts Installation..... 3

Installation Methods4

Recommended Control Method 6

Maintenance 6

Limited Warranty 7

Circuit Diagram 8

Important Warnings

To reduce the risk of fire, electric shock, or personal injury, please adhere to the following guidelines:

- Please use this unit strictly according to the manufacturer's instructions. If you have any questions, contact the manufacturer for clarification.
- Installation and electrical wiring must be performed by qualified personnel in compliance with all applicable regulations and standards, including fire safety protocols.
- Ensure the ceiling beams support at least five times the product's weight.
- When working on walls or ceilings, avoid damaging electrical wires and other hidden utilities.
- Ensure the power is off before performing any maintenance or cleaning on the equipment to prevent accidents.
- Do not place switches within reach of bathtubs or showers to prevent electrical hazards.
- Store the unit properly when not in use to prevent potential damage.
- Do not dismantle or modify the unit in any way.
- Prevent fire or electric shock hazards by ensuring the product is properly grounded.
- The operating temperature range for this product is -13°F to 113°F.

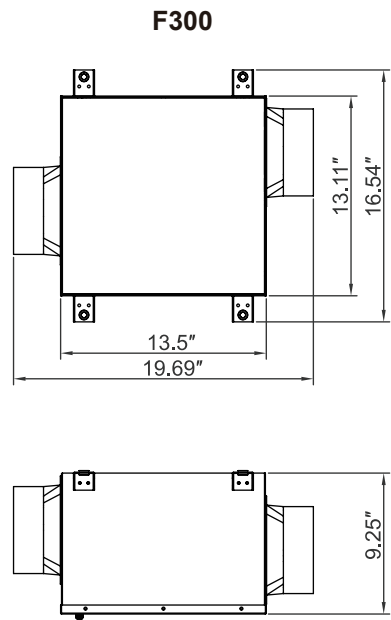
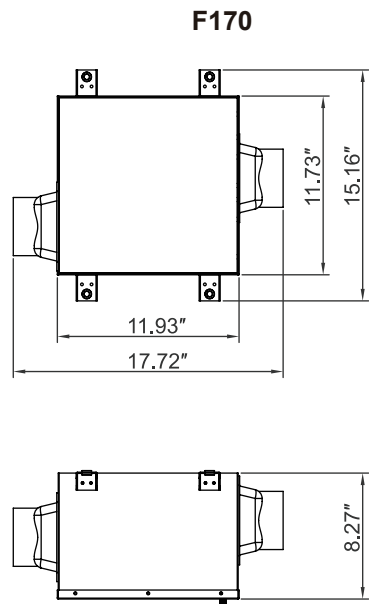
Parts Description

Parts for F170 and F300 include:

- Instruction manual × 1
- Mounting brackets × 4
- Anti-vibration pads × 4
- M4×8 screws × 24
- M4×35 screws × 10
- Ratchet rope × 4
- Self-tapping hooks × 4

Please verify that all listed items are included. If any items are missing, contact us promptly.

Model and Parameters



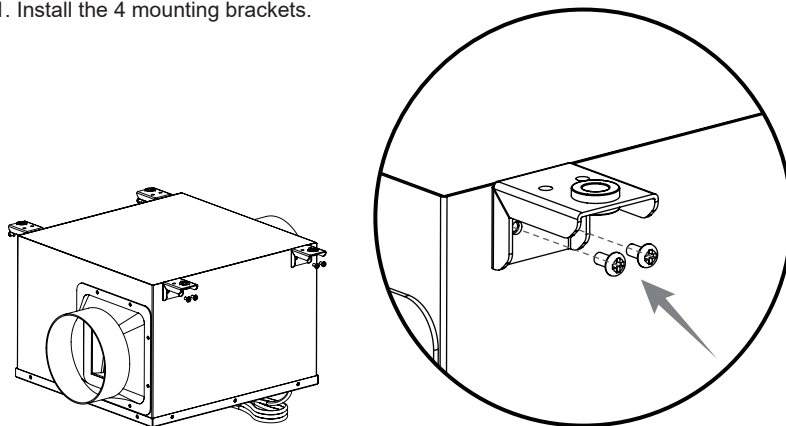
Model Number	F170	F300
Power Supply Voltage	115 V, 60 Hz	115 V, 60 Hz
Overload Protection	3 A	3 A
Product Dimensions	11.93" × 11.73" × 8.27"	13.5" × 13.11" × 9.25"
Vent Size	4"	6"
Airflow Volume	170 CFM	300 CFM
Power	50 W	105 W

Parts Installation

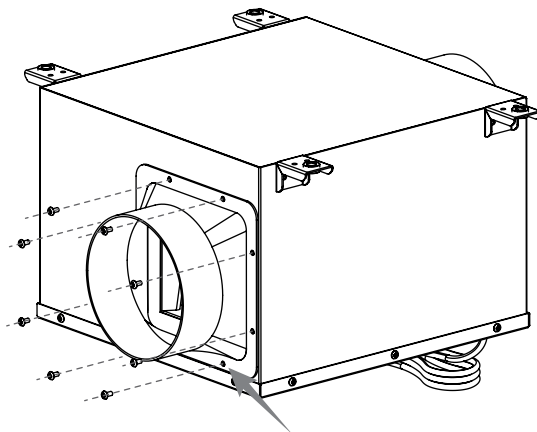
Before proceeding with the main installation, ensure all relevant parts are installed.

Required Tools: Screwdriver

1. Install the 4 mounting brackets.



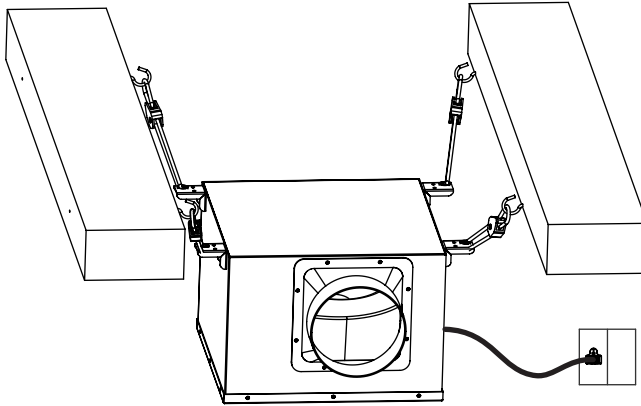
2. Install the inlet flange and outlet flange.



Installation Methods

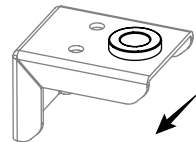
Method 1: Hoisting

See diagram below.



Required Installation Components:

- Self-tapping hooks × 4
- Ratchet ropes × 4
- Anti-vibration pads × 4

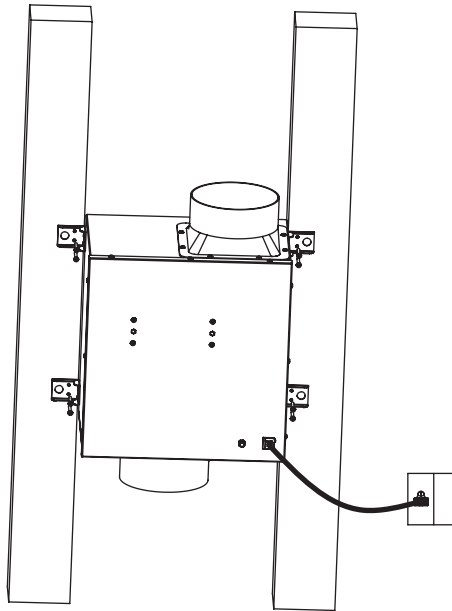


Installation Steps:

1. Install the anti-vibration pads as shown in the diagram.
2. Determine the installation position, mark it, and securely install the self-tapping hooks.
3. Thread the spring clip connected to the rope through the mounting brackets of the unit, ensuring it does not slip out.
4. Hang the spring clip near the ratchet end onto the self-tapping hook. Adjust the length of the ratchet rope to balance the unit.
5. Once installation is complete, you can power on and operate the unit.

Method 2: Direct Installation

See diagram below.



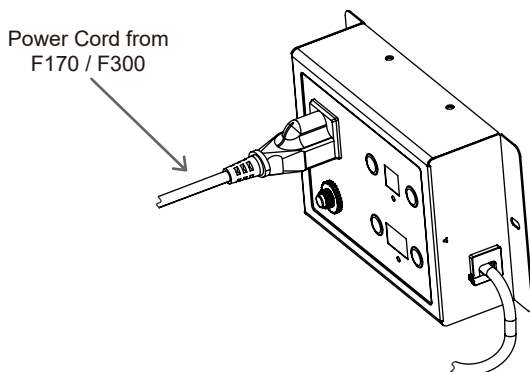
Required Installation Components:

- M4×35 screws × 8

Installation Steps:

1. Determine the installation position and make appropriate markings.
2. Following the diagram, use a screwdriver to secure the screws through the mounting brackets into the wooden frame to ensure a balanced installation.
3. Once installation is complete, you can power on and operate the unit.

Recommended Control Method



This device is compatible with our Adjustable Thermostat & Humidity Controller (THCS-10 / TCS-10). Connect the power plug of the F170 / F300 to the socket of the THCS-10 / TCS-10, and install the THCS-10 / TCS-10 in the target room.

When the temperature and humidity set on the THCS-10 / TCS-10 are reached, it will turn off the power to the F170 / F300.

When the THCS-10 / TCS-10 detects that the temperature and humidity in the room exceed the set values, it will turn on the power to the F170 / F300, achieving automatic control.

Maintenance

WARNING: Before performing any maintenance, disconnect the power supply.

Cleaning the Machine:

- Clean the exterior of the machine with a soft damp cloth.
- Do not use any cleaning agents.

Storage of F170 / F300:

1. Turn off the machine and allow it to air dry.
2. Store the power cord neatly inside the packaging box.
3. Place the device in a clean and dry location.

Limited Warranty

The limited warranty takes effect from the date of purchase. ALORAIR guarantees to the original purchaser that this product is free from defects in materials or workmanship for 3 years. ALORAIR will, at its discretion, decide to repair or replace any faulty parts free of charge (excluding shipping costs).

Customer Responsibilities to Qualify for Warranty Service:

1. The customer must provide regular maintenance and upkeep.
2. The disassembly and reinstallation of the equipment are the sole responsibility of the owner.
3. If the customer cannot return the equipment to an authorized repair center, all shipping costs are covered by the customer, including incidental expenses related to shipping.
4. If shipping is required, the customer assumes all risks of loss or damage.

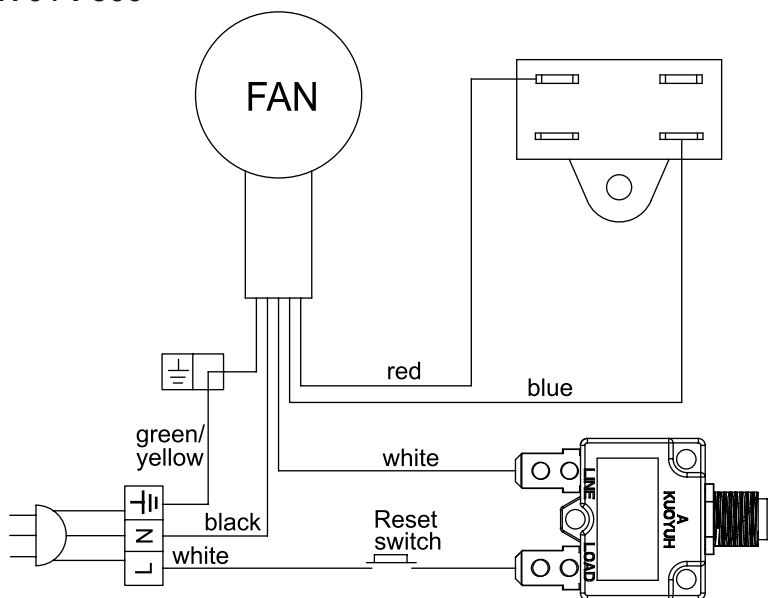
Limited Warranty Exclusions

This limited warranty covers material or craftsmanship defects encountered during normal household, commercial, or non-commercial use of the product. However, it does not cover the following:

- Damage from unintended use of this product.
- Damage from unauthorized modification or alteration of the product.
- Cosmetic damage including scratches, dents, chips, and other surface damage to this product.
- Damage from abuse, misuse, pests, accidents, fires, floods, or other natural events.
- Damage from incorrect line currents, voltages, fluctuations, and surges.
- Damage from failure to maintain and upkeep the product.
- Using this product in rooms with outdoor swimming pools or in spas will void the limited warranty.

Circuit Diagram

F170 / F300





WARRANTY REGISTRATION CARD

Return To:
AlorAir Solutions, Inc.

ORDER NUMBER: _____

MODEL: _____ SERIAL #: _____

INSTALLER: _____ INSTALLATION DATE: _____

NAME: _____

ADDRESS: _____

CITY: _____ STATE: _____ ZIP: _____

PHONE #: _____ EMAIL: _____



- ▶ If you have any questions, please feel free to contact us at (888) 990-7469 or visit www.alorair.com
- ▶ Register your unit for warranty using this link: www.alorair.com/page/Warranty--Warranty-registration
- ▶ Warranty Registration <https://www.alorair.com> or scan this QR code to direct you to the warranty registration website.



AlorAir Solutions INC.

Add: 14752 Yorba Ct Chino CA 91710 US

Tel: (888)-990-7469

E-mail: support@alorair.com